

## IPDS II/2T

STATE OF THE ART  
DIFFRACTOMETER  
WITH EXTREMELY  
SENSITIVE AND  
RELIABLE IMAGING  
PLATE TECHNOLOGY



### SINGLE CRYSTAL DIFFRACTOMETRY

#### IPDS II

- Very high dynamic range (16 bits)
- Extremely low background (no dark current)

#### IPDS 2T

- Movable goniometer for higher  $2\theta$  angles
- Enlarged detection of reciprocal space
- Dual beam capabilities for highest flexibility

YOUR PARTNER IN X-RAY DIFFRACTION

STOE & Cie GmbH | [WWW.STOE.COM](http://WWW.STOE.COM)

# IPDS II/2T

UNPARALLELED RELIABILITY, BUILT TO SERVE ALL SCIENTIFIC NEEDS: E.G. SMALL MOLECULES, PROTEINS, ELECTRON DENSITY MEASUREMENTS

## IMAGING PLATE TECHNOLOGY

Combines high sensitivity, large dynamic range and ability for long-time exposures with extreme stability and lowest maintenance.

## FLEXIBLE SAMPLE ENVIRONMENT

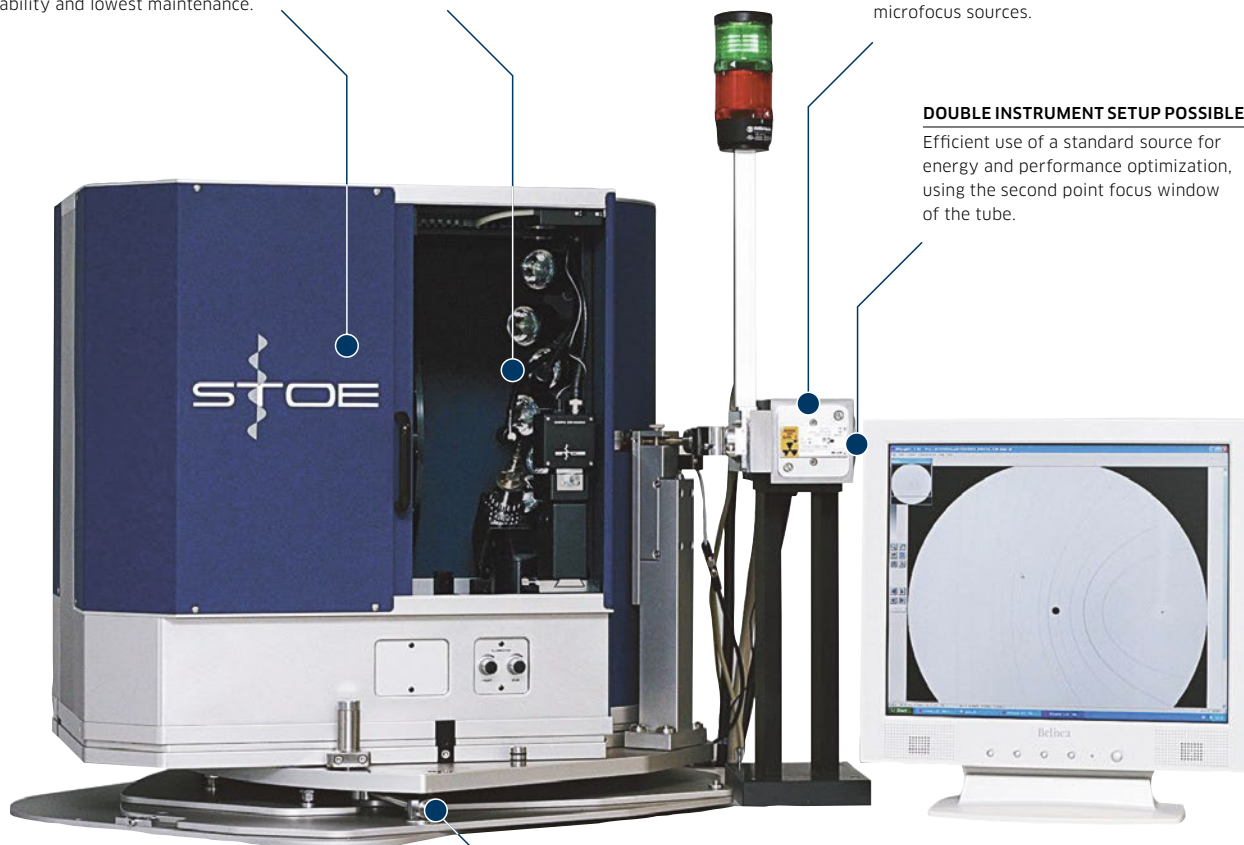
High- and low-temperature attachments as well as high pressure cells available.

## SINGLE & DUAL BEAM CAPABILITY

Cu, Mo, Ag sealed Tube and microfocus sources.

## DOUBLE INSTRUMENT SETUP POSSIBLE

Efficient use of a standard source for energy and performance optimization, using the second point focus window of the tube.



## VERSION IPDS 2T

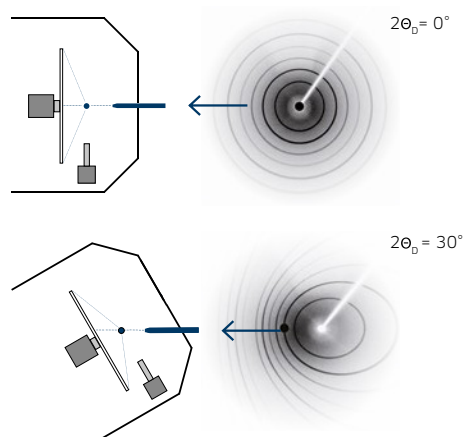
Yielding maximum  $2\theta$ -angles of up to  $137^\circ$  by turning the goniometer around the  $\theta$ -axis.

## IPDS II

- One instrument designed for both, small molecules and proteins
- Perfect for weak scatterers
- Reliable intensities of very weak and very strong reflexions within the same frame
- Long lifetime, low maintenance, low costs of ownership

## IPDS 2T

- Extend the features of IPDS II by collecting data up to  $137^\circ$  in  $2\theta$
- Useful for Cu radiation and electron density measurements



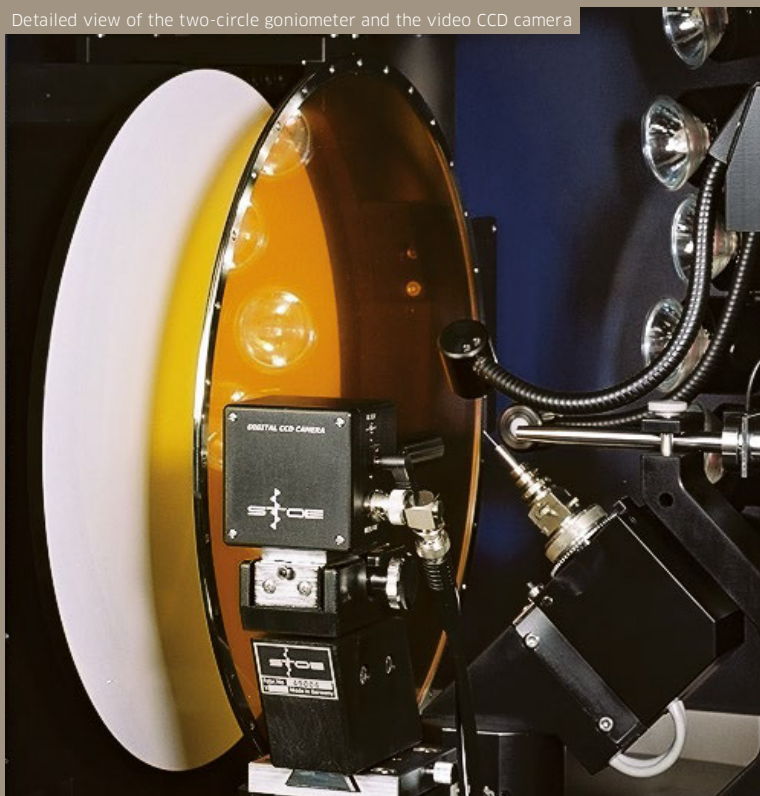
The shown Scherrer rings are presenting the turn from  $0^\circ$  to  $30^\circ$   $2\theta$  using  $\text{LaB}_6$  powder as the sample material.

FULL ACCESSIBILITY  
OF THE SAMPLE ENVIRONMENT  
FOR EASY ADAPTATION OF  
HIGH AND LOW TEMPERATURE  
ATTACHEMENTS AS WELL AS  
HIGH PRESSURE CELLS

Double Instrument Setup



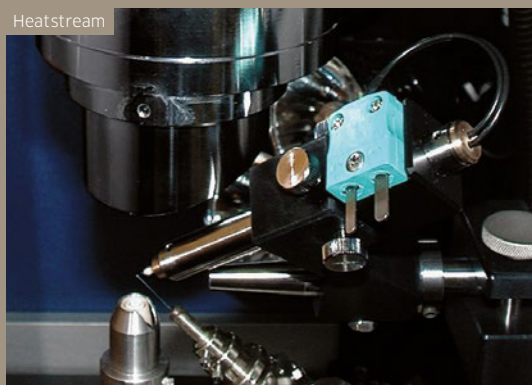
Detailed view of the two-circle goniometer and the video CCD camera



Dual Beam Setup



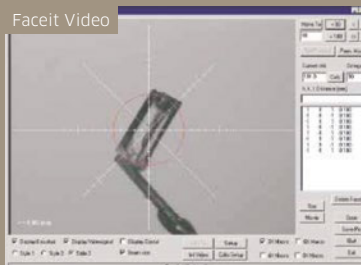
Heatstream



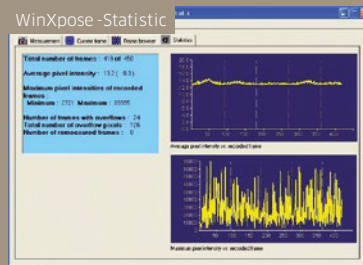
## X-Area

- Software for easy data collection and evaluation
- Powerful solution for complicated situations (multi-domain and modulated crystals)
- Support for DACs

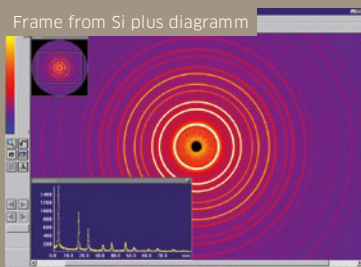
Facet Video



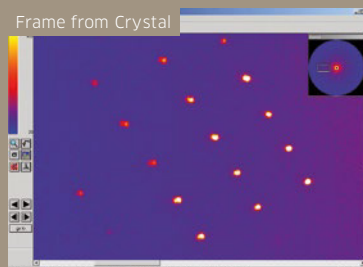
WinXpose -Statistic



Frame from Si plus diagramm



Frame from Crystal





SYSTEM SPECIFICATIONS	IPDS II	IPDS 2T
Dimensions (including system cabinet, max.)	1680 x 880 x 2110 mm	1680 x 880 x 2110 mm Double Setup: 2050 x 1260 x 2110 mm
Weight (complete system/depending on configuration)	390 kg	420 kg Double Setup: 600 kg
Max 2 $\theta$ :	77°	137°
Goniometer	$\omega$ : 180°, $\Phi$ : 360°	$\omega$ : 180°, $\Phi$ : 360° 2 $\theta$ : 0°, 5°, 30°, 45°, 60°
Detector distance	40 – 200 mm (automatically set)	40 – 200 mm (automatically set)
Minimum d/Å	0.45 Ag K $\alpha$ , 0.57 Mo K $\alpha$	0.30 Ag K $\alpha$ , 0.38 Mo K $\alpha$ , 0.83 Cu K $\alpha$
X-ray sources	Sealed Tubes: Ag, Mo, Cu Microfocus sources: Ag, Mo, Cu	Sealed Tubes: Ag, Mo, Cu Microfocus sources: Ag, Mo, Cu
DETECTOR SPECIFICATIONS	IPDS II	IPDS 2T
Diameter Image Plate (active area)	340 mm	340 mm
Intrinsic noise	low noise due to absence of dark current	low noise due to absence of dark current
Linear dynamic range	> 1:10 <sup>5</sup>	> 1:10 <sup>5</sup>

Specifications without obligation and subject to change without notice.