

MANUAL COBRA300 #2

Set	Flow	GAS DELIVERY	
	Off	CH ₄	Off
	Off	H ₂	Off
	Off	O ₂	Off
	Off	N ₂	Off
	Off	SF ₆	Off

STATUS

Station **PMC2** Name **Cobra300 #2** Function

Status **Idle** Process Readiness Ready To Process

Quick Actions: **Pump** **Vent** **Leak-Rate**

GAS DELIVERY	Set	Flow
CHF ₃	Off	Off
HBr	Off	Off
BCL ₃	Off	Off
Cl ₂	Off	Off
SiH ₄	Off	Off

RF & PLASMA MATCHING

ICP RF	Forward 0.0w	ICP AMU	C1 Position 50.0%
	Reflected 0.0w		C2 Position 50.0%
	Off		Hold

Table RF	Forward 0.0w	Table AMU	C1 Position 50.0%
	Reflected 0.0w		C2 Position 50.0%
	Off		Hold

VACUUM & PRESSURE

APC 0% Close

Process Gauge 0.000 mTorr

Vacuum Switch >2Torr Above Vacuum

Gauge 0.000 mTorr

Valve

CHAMBER

Substrate

CLAMP LIFT

Heater 20.0°C Off

Table Heater 20.0°C Off

Diagram

Dashboard

Hybrid

Transport Handler

PECVD #1

Cobra300 #2

Automatic

Manual

Recipes

Data

Diagnostics

Settings

Alarms

Information

PTIQ

Intelligent Software. Powerful Solutions.



Introducing PTIQ

PTIQ is the latest intelligent software solution for PlasmaPro and Atomfab processing equipment. It provides an exceptional level of system control, optimising process performance.

PTIQ is the latest intelligent software solution for Plasma Technology systems. It provides an exceptional level of system control with powerful scheduling and insightful reporting tools, that unlock new possibilities for improved processing efficiency and dynamic workflows.

PTIQ Software optimises system and process performance in the Lab and Fab, with different levels of software available to suit facility requirements.

User-friendly Design

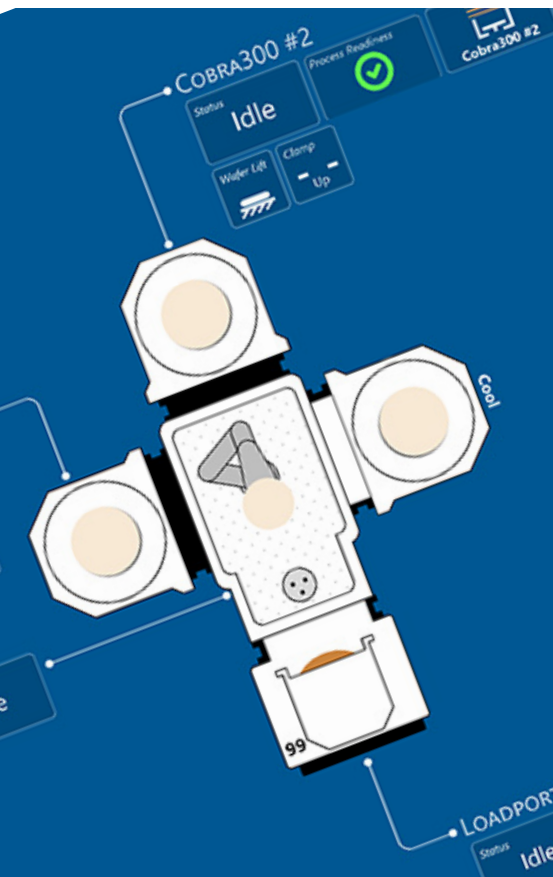
- 'At a glance' design makes information and control more accessible for maximum user productivity
- System components can be represented by LabView-style functional diagrams to better understand the system architecture
- High contrast colour scheme designed for use in typical yellow light manufacturing environments
- Designed with touchscreen use in mind

Operational Readiness & Accuracy

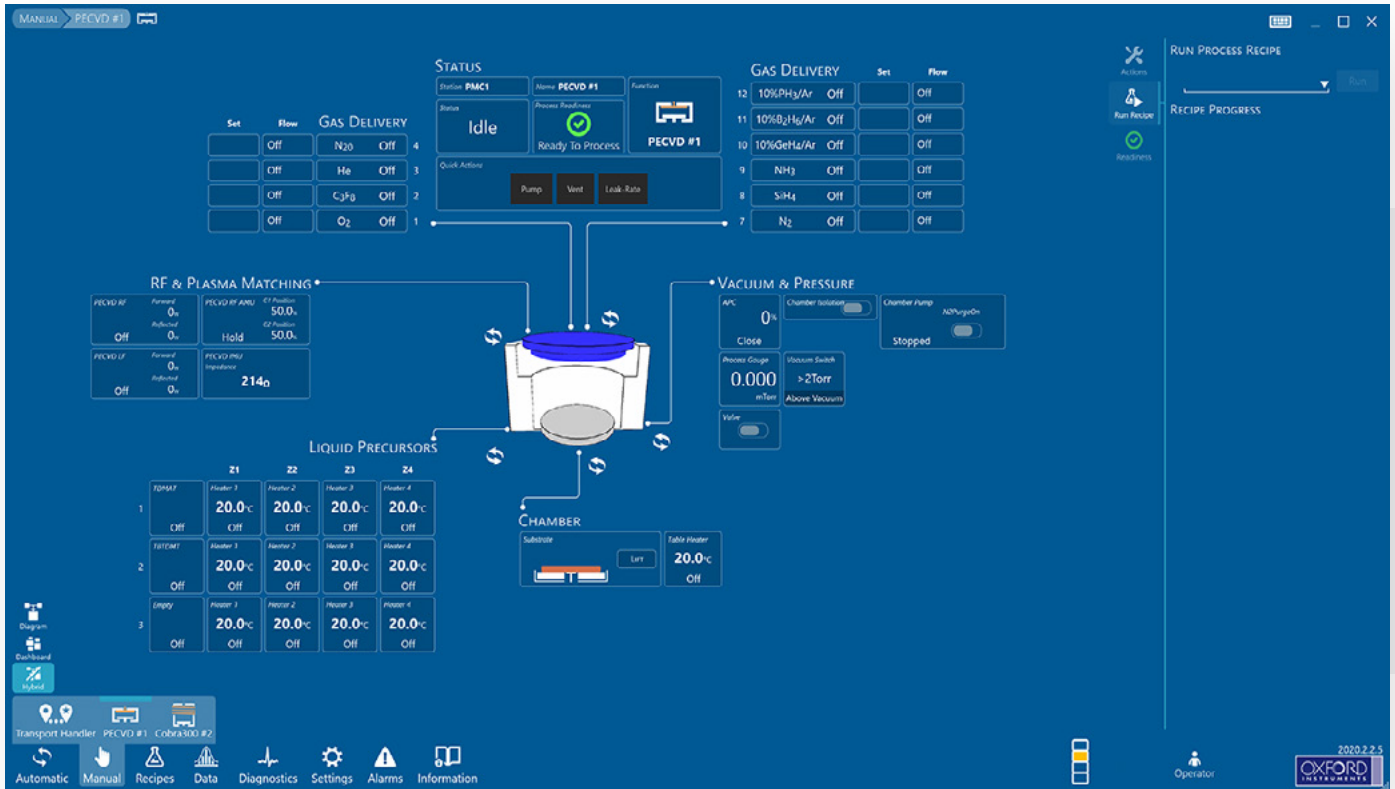
- Visual indicators of system process readiness help the user avoid operational issues earlier, for better process results
- Compare results of recipe runs to ensure reliable, repeated processes over time, before/after events
- Millisecond accuracy and 1000-point logging for improved data interrogation

Flexibility & Reliability

- Compliance to the SEMI 95 human interface standard provides a familiar experience for your operators and engineers
- Customisable for error-free, multi-user operation in any cleanroom environment



Software Features



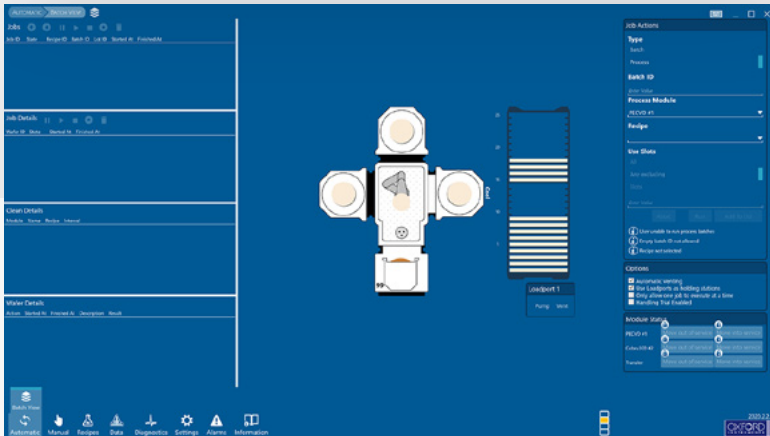
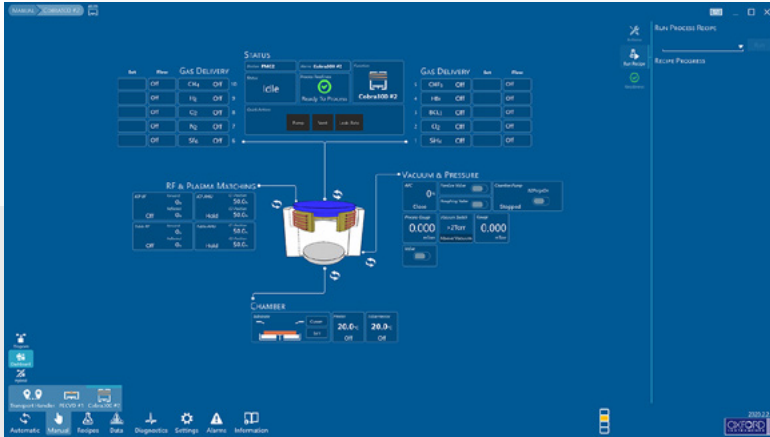
Recipes

- Recipes in editable format for error-free and ease of use
- Recipes in private mode for increased security in multi-user environments
- Runs are linked to specific recipe versions, for improved traceability
- Recipes include standard checks, such as for leak up rates and MFC fill rate, enabling verification of performance before wafer processing, thus automating interventions for increased efficiency
- Tolerance values can be defined per-step, enabling more refined control over your process

Permissions & Scheduling

- Device operation linked to user accounts, for secure use
- Configuration options (e.g. pressure units, batch options) linked to user accounts, to fine-tune the user experience for increased productivity
- The powerful scheduling enables overlapped chamber operation with wafer transfers (including wafer lift, electrostatic clamping, wafer preheating), for increased throughput

Software Options



AnalytIQs

PTIQ AnalytIQs is a set of analytical tools to maximise the uptime of the system, to allow deeper understanding and interpretation of process logged data through the statistical analysis of data. They further extend the PTIQ LogViewer for the tracking and analysis of all system parameters.

SECS/GEM Factory Host Connection

A software module that connects the Oxford equipment over a SECS/GEM link to a factory host controller for use in an automated semiconductor fab.

On the Roadmap



AnalytIQs Pro

Premium module to measure, analyse and report on the data captured whilst processing.

DiagnostIQs

A set of engineer analysis tools that are essential for self-maintained systems and trouble shooting drills down to the heart of the electronics to control the equipment. These are the same tools available to Oxford Instruments customer support engineers.

PTIQ Backup

This premium module is responsible for periodic backup of recipes, configuration and process run data to a remote computer. This can be for archival purposes or to transpose the data ready for external processing as required.

How to upgrade

If you currently run a system with PC2000 or PC4500 and want to upgrade to PTIQ, we have several upgrade paths available. On completion of upgrade, you will be automatically enrolled in the Oxford Instruments Software Assurance Agreement.

- The Software Assurance Agreement covers the system control software and provides software help desk access beyond existing warranties
- The agreement provides peace of mind knowing you have access to all the latest software releases with improved features and functionalities
- Supported recipe migration, including use of migration tools

We also have site wide PTIQ Upgrade plans. As development effort continues to shift from PCx applications to PTIQ, you can upgrade your whole site for a discounted rate to ensure continuity of software support going forward.

Visit plasma.oxinst.com/PTIQ for more information on how to upgrade.

For further information please contact your local Oxford Instruments Plasma Technology office.

Email
plasma@oxinst.com

Phone
UK, Yatton
+44 (0) 1934 837000

Germany, Wiesbaden
+49 (0) 6122 937 161

India, Mumbai
+91 22 4253 5100

Japan, Tokyo
+81 3 5245 3261

PR China:

- Beijing
- Guangzhou
- Shanghai

+86 400 678 0609

Singapore
+65 6337 6848

Taiwan
+886 3 5788696

US, Canada & Latin America
Concord, MA
+1 800 447 4717

Request a
live demo!

Please visit plasma.oxinst.com/PTIQ-software to request a live demonstration from one of our experts.

visit plasma.oxinst.com

Oxford Instruments, at Yatton, UK, operates Quality Management Systems approved to the requirements of BS EN ISO 9001. This publication is the copyright of Oxford Instruments plc and provides outline information only, which (unless agreed by the company in writing) may not be used, applied or reproduced for any purpose or form part of any order or contract or regarded as the representation relating to the products or services concerned. Oxford Instruments' policy is one of continued improvement. The company reserves the right to alter without notice the specification, design or conditions of supply of any product or service. Oxford Instruments acknowledges all trademarks and registrations. Certain processes are not offered in a few countries, respecting local patents.

